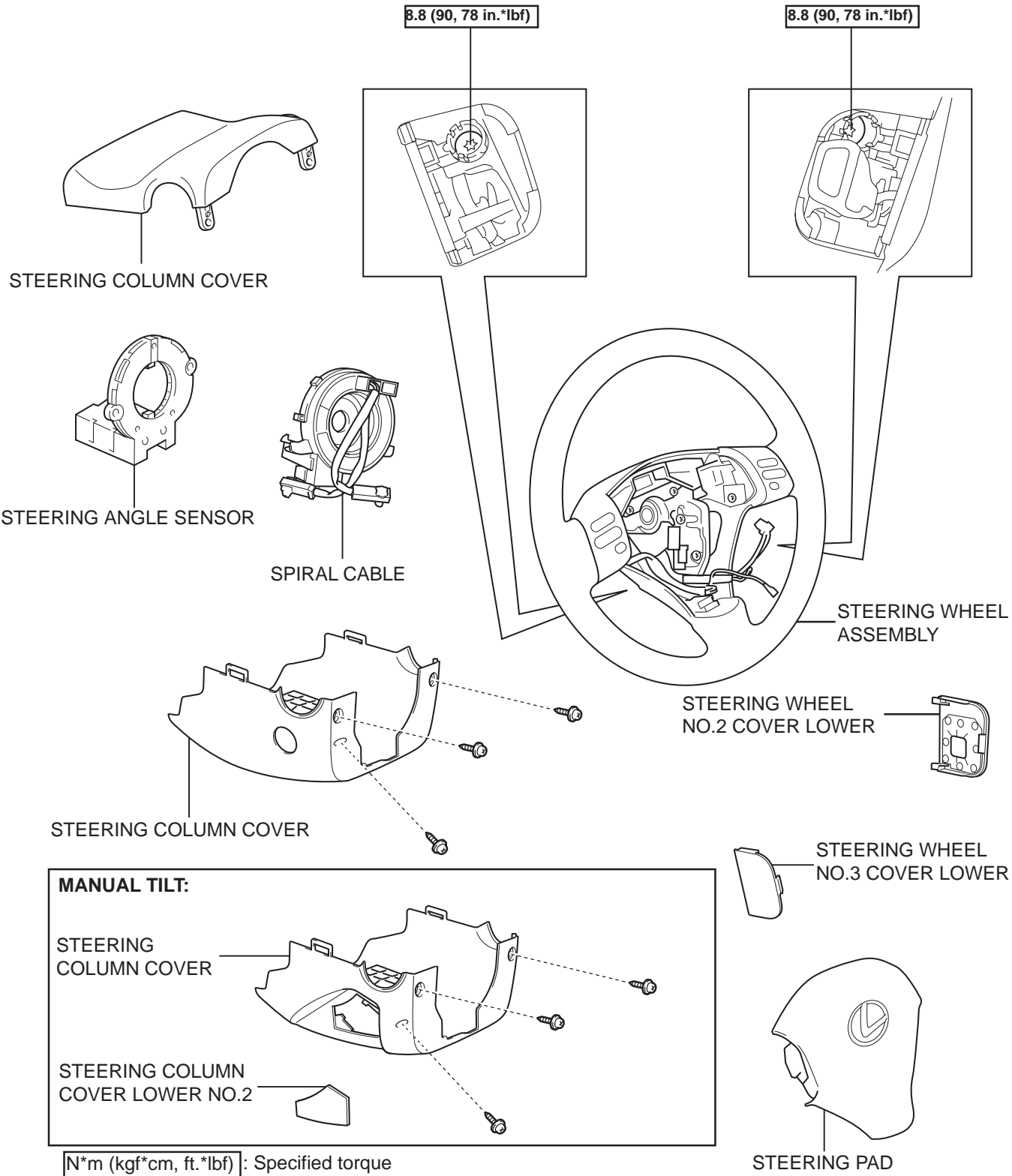


SPIRAL CABLE

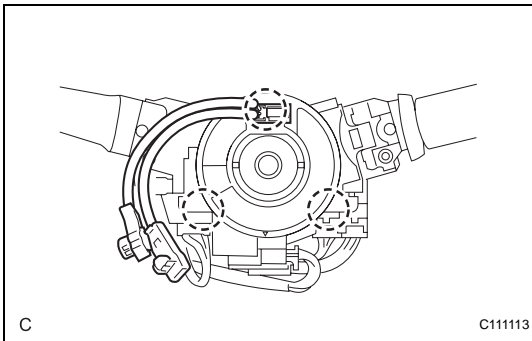
COMPONENTS

RS



REMOVAL

1. **PRECAUTION**
CAUTION:
Be sure to read the "PRECAUTION" thoroughly before servicing (See page [RS-1](#)).
2. **DISCONNECT CABLE FROM NEGATIVE BATTERY TERMINAL**
CAUTION:
Wait for 90 seconds after disconnecting the cable to prevent the airbag working
3. **PLACE FRONT WHEELS FACING STRAIGHT AHEAD**
4. **REMOVE STEERING WHEEL NO.3 COVER LOWER** (See page [RS-387](#))
5. **REMOVE STEERING WHEEL NO.2 COVER LOWER** (See page [RS-387](#))
6. **REMOVE STEERING PAD** (See page [RS-388](#))
7. **REMOVE STEERING WHEEL ASSEMBLY (for Manual Tilt)** (See page [SR-40](#))
8. **REMOVE STEERING WHEEL ASSEMBLY (for Power Tilt and Power Telescopic)** (See page [SR-50](#))
9. **REMOVE STEERING COLUMN COVER (for Manual Tilt)** (See page [SR-40](#))
10. **REMOVE STEERING COLUMN COVER (for Power Tilt and Power Telescopic)** (See page [SR-51](#))
11. **REMOVE SPIRAL CABLE**
 - (a) Disconnect the connectors from the spiral cable.
NOTICE:
When handling the airbag connector, take care not to damage the airbag wire harness.
 - (b) Disengage the 3 claws and remove the spiral cable.
12. **REMOVE STEERING ANGLE SENSOR** (See page [BC-128](#))

RS

INSPECTION

1. INSPECT SPIRAL CABLE

- (a) If there are any defects as mentioned below, replace the spiral cable with a new one:
Scratches, cracks, dents or chips on the connector or the spiral cable.

INSTALLATION

1. INSTALL STEERING ANGLE SENSOR (See page [BC-128](#))

2. INSTALL SPIRAL CABLE

- (a) Check that the front wheels are facing straight ahead.

- (b) Set the turn signal switch to the neutral position.

NOTICE:

If it is not in the neutral position, the pin of the turn signal switch may snap.

- (c) Install the spiral cable.

NOTICE:

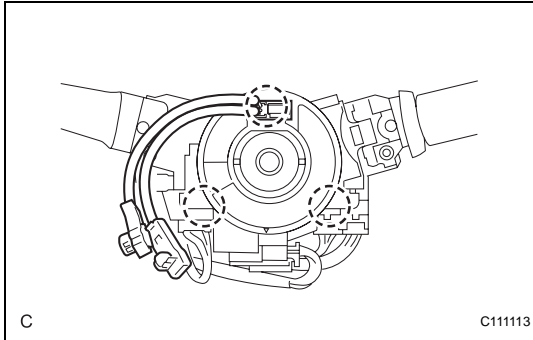
When replacing the spiral cable with a new one, remove the lock pin before installing the steering wheel assembly.

- (d) Connect the connectors to the spiral cable.

NOTICE:

When handling the airbag connector, take care not to damage the airbag wire harness.

RS



3. INSTALL STEERING COLUMN COVER (for Manual Tilt) (See page [SR-45](#))

4. INSTALL STEERING COLUMN COVER (for Power Tilt and Power Telescopic) (See page [SR-57](#))

5. ADJUST SPIRAL CABLE

- (a) Check that the ignition switch is off.

- (b) Check that the battery negative (-) terminal is disconnected.

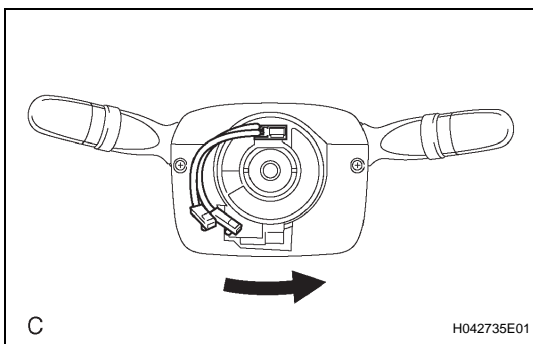
CAUTION:

After removing the terminal, wait for at least 90 seconds before starting the operation.

- (c) Rotate the spiral cable counterclockwise slowly by hand until it feels firm.

NOTICE:

Do not turn the spiral cable by the airbag wire harness.



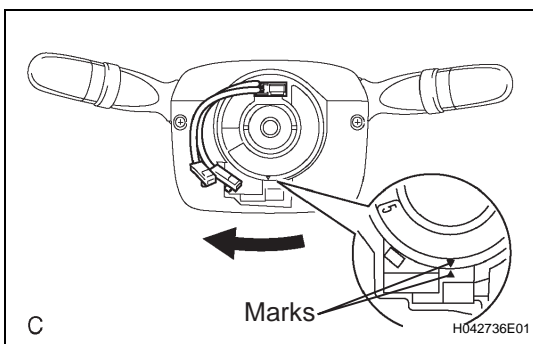
- (d) Rotate the spiral cable clockwise approximately 2.5 turns to align the marks.

NOTICE:

Do not turn the spiral cable by the airbag wire harness.

HINT:

The spiral cable will rotate approximately 2.5 turns to both the left and right from the center.



6. INSTALL STEERING WHEEL ASSEMBLY (for Manual Tilt) (See page [SR-45](#))

RS

7. **INSTALL STEERING WHEEL ASSEMBLY** (for Power Tilt and Power Telescopic) (See page [SR-57](#))
8. **INSPECT STEERING WHEEL CENTER POINT**
9. **INSTALL STEERING PAD** (See page [RS-388](#))
10. **INSTALL STEERING WHEEL NO.2 COVER LOWER** (See page [RS-389](#))
11. **INSTALL STEERING WHEEL NO.3 COVER LOWER** (See page [RS-389](#))
12. **CONNECT CABLE TO NEGATIVE BATTERY TERMINAL**
13. **INSPECT STEERING PAD** (See page [RS-389](#))
14. **PERFORM INITIALIZATION**
 - (a) Perform initialization.
HINT:
Some systems need initialization when disconnecting the cable from the negative battery terminal.
15. **INSPECT SRS WARNING LIGHT**
 - (a) Inspect the SRS warning light (See page [RS-25](#)).